

# How LG Multi F Ductless Split Systems Work

LG heat pump systems consist of three basic components: An inverter (variable speed) outdoor heat pump, a stylish and quiet indoor unit and piping and wiring to connect outdoor to indoor. Multiple indoor units allow precise indoor temperature control throughout your home and the ability to turn off or turn down areas that aren't in use right now.

### HIGH-PERFORMANCE HEATING TO -20°C AND BEYOND

### WHISPER-QUIET INDOOR UNITS

Indoor unit

50 dB  
Conversation at Home

40 dB  
Bird Calls

60 dB  
Conversation in restaurant

70 dB  
Vacuum cleaner

As low as 19 dB

### BEAUTIFUL PICTURE FRAME AND MIRROR UNITS

### LG SMART AC CONVENIENCE

### WALL, CEILING AND CENTRAL DUCTED OPTIONS

### SIMPLE CONTROL OPTIONS

WIRED WALL MOUNTED

WIRELESS REMOTE

## HIGH EFFICIENCY HEATING





**What is COP?** COP is Coefficient of Performance, a measure of electric heating efficiency.


- An electric heater consumes **one unit of electricity** to produce **one unit of heat**.
- The LG Multi F MAX LMU480HV has a COP of 3.7, consuming **one unit of electricity** to produce **3.7 units of heat**.
- Heat pumps can produce more than three times the efficiency of electric heat.

Electric Heaters

LG Heat Pump

Multi F model LMU480HV with 48,000 BTU combined indoor unit capacity has a COP of 3.7 at 8°C outdoor temperature (rated temperature). At -15°C outdoor temperature, the COP is 3.11 at maximum heating capacity of 27,500 BTU while consuming 2,59kW.

MULTI F OUTDOOR UNITS						
	Specification	Unit	LMU18CHV	LMU24CHV	LMU30CHV	LMU36CHV
Capacity	Energy Star		 Non-Ducted	 Non-Ducted Mixed Non-Ducted & Ducted	 Non-Ducted Mixed Non-Ducted & Ducted	 Non-Ducted Mixed Non-Ducted & Ducted
	Rated Cooling Capacity	Btu/h	17,000	20,000	30,000	32,000
	Cooling Capacity Range	Btu/h	8,400 ~ 19,000	8,400 ~ 25,000	8,400 ~ 36,000	8,400 ~ 38,400
	Rated Heating Capacity (8 °C outdoor)	Btu/h	22,000	24,000	32,000	36,000
	Heating Capacity Range (8 °C outdoor)	Btu/h	10,248 ~ 24,000	9,240 ~ 28,800	9,240 ~ 38,400	9,240 ~ 41,600
	Max Heating Capacity at -8 °C	Btu/h	19,161	21,097	26,739	29,105
	Max Heating Capacity at -15 °C	Btu/h	14,807	14,595	20,622	22,057
	Max Heating Capacity at -20 °C	Btu/h	9,912	10,385	13,753	15,823
	SEER / EER		22.0 / 13.0	21.7 / 13.5	22.0 / 13.0	22.0 / 13.0
	HSPF Region IV / V		10.0 / 8.7	10.0 / 8.7	9.7 / 8.43	10.6 / 9.22
	COP 8 °C rated / -15 °C at maximum capacity		3.8 / 2.24	3.9 / 2.18	3.2 / 2.06	3.9 / 2.18
Power	Voltage	V, Ø, Hz	208/230-1-60	208/230-1-60	208/230-1-60	208/230-1-60
	Cooling Power Input	kW	1.31	1.48	2.31	2.46
	Heating Power Input	kW	2.04	1.80	2.49	2.74
	MCA / MOCP	A	13.3 / 20	14.3 / 20	16.6 / 25.0	17.9 / 25
	Power/Communication Wiring	No. x AWG	4 x 18	4 x 18	4 x 18	4 x 18
Dimensions & Weight	Dimensions (WxHxD)	in	34 <sup>1</sup> / <sub>4</sub> x 25 <sup>25</sup> / <sub>32</sub> x 12 <sup>19</sup> / <sub>32</sub>	34 <sup>1</sup> / <sub>4</sub> x 25 <sup>25</sup> / <sub>32</sub> x 12 <sup>19</sup> / <sub>32</sub>	37 <sup>13</sup> / <sub>32</sub> x 32 <sup>27</sup> / <sub>32</sub> x 13	37 <sup>13</sup> / <sub>32</sub> x 32 <sup>27</sup> / <sub>32</sub> x 13
	Weight (Net/Shipping)	lbs	100/108	100/108	137/148	137/148
Unit Data	Minimum Connectable Indoor Units	Qty	2	2	2	2
	Maximum Connectable Indoor Units	Qty	2	3	4	4
	Max Total Indoor Connected Capacity	Btu/h	24,000	33,000	40,000	48,000
Warranty	Parts / Compressor		5 / 7	5 / 7	5 / 7	5 / 7

MULTI F MAX OUTDOOR UNITS					
	Specification	Unit	LMU480HV	LMU540HV	LMU600HV
Capacity	Energy Star		 Non-Ducted		
	Rated Cooling Capacity	Btu/h	48,000	52,500	60,000
	Cooling Capacity Range	Btu/h	14,400 ~ 58,000	14,400 ~ 63,200	15,600 ~ 68,000
	Rated Heating Capacity (8 °C outdoor)	Btu/h	54,000	58,000	64,000
	Heating Capacity Range (8 °C outdoor)	Btu/h	15,840 ~ 61,000	16,272 ~ 64,000	17,940 ~ 70,000
	Max Heating Capacity at -8 °C	Btu/h	49,014	51,832	
	Max Heating Capacity at -15 °C	Btu/h	38,900	41,137	
	Max Heating Capacity at -20 °C	Btu/h	27,529	29,112	
	SEER / EER		19.5 / 12.5	18.4 / 10.3	20.5 / 11.4
	HSPF Region IV / V		10.0 / 8.7	8.7 / 7.57	11.0 / 9.56
	COP 8 °C rated / -15 °C at maximum capacity		3.7 / 3.11	3.1 at 8 °C rated	3.5 at 8 °C rated
Power	Voltage	V, Ø, Hz	208/230-1-60	208/230-1-60	208/230-1-60
	Cooling Power Input	kW	3.84	5.1	5.26
	Heating Power Input	kW	4.32	5.4	5.33
	MCA / MOCP	A	27.3 / 40	29.4 / 40	32.2 / 45
	Power/Communication Wiring	No. x AWG	ODU → BDU: 4 x 16 BDU → IDU: 4 x 18	ODU → BDU: 4 x 16 BDU → IDU: 4 x 18	ODU → BDU: 4 x 16 BDU → IDU: 4 x 18
Dimensions & Weight	Dimensions (WxHxD)	in	37 <sup>13</sup> / <sub>32</sub> x 54 <sup>11</sup> / <sub>32</sub> x 13	37 <sup>13</sup> / <sub>32</sub> x 54 <sup>11</sup> / <sub>32</sub> x 13	37 <sup>13</sup> / <sub>32</sub> x 54 <sup>11</sup> / <sub>32</sub> x 13
	Weight (Net/Shipping)	lbs	214/236	214/236	214/236
Unit Data	Minimum Connectable Indoor Units	Qty	2	2	2
	Maximum Connectable Indoor Units	Qty	8	8	8
	Max Total Indoor Connected Capacity	Btu/h	65,000	73,000	81,000
Warranty	Parts / Compressor		5 / 7	5 / 7	5 / 7

**LG**  
Life's Good

Visit [LGcomfort.ca](http://LGcomfort.ca)  
Our site is an excellent resource and where you can find the LG installers in your area.  
**LG Electronics Canada Inc.** 20 Norelco Drive. North York, ON M9L 2X6

Design, features and specification subject to change without notice.  
©2016 LG Electronics Canada, Inc. North York, ON. All rights reserved. "LG Life's Good" is a registered trademark of LG Corporation.

201603

**LG**  
Life's Good

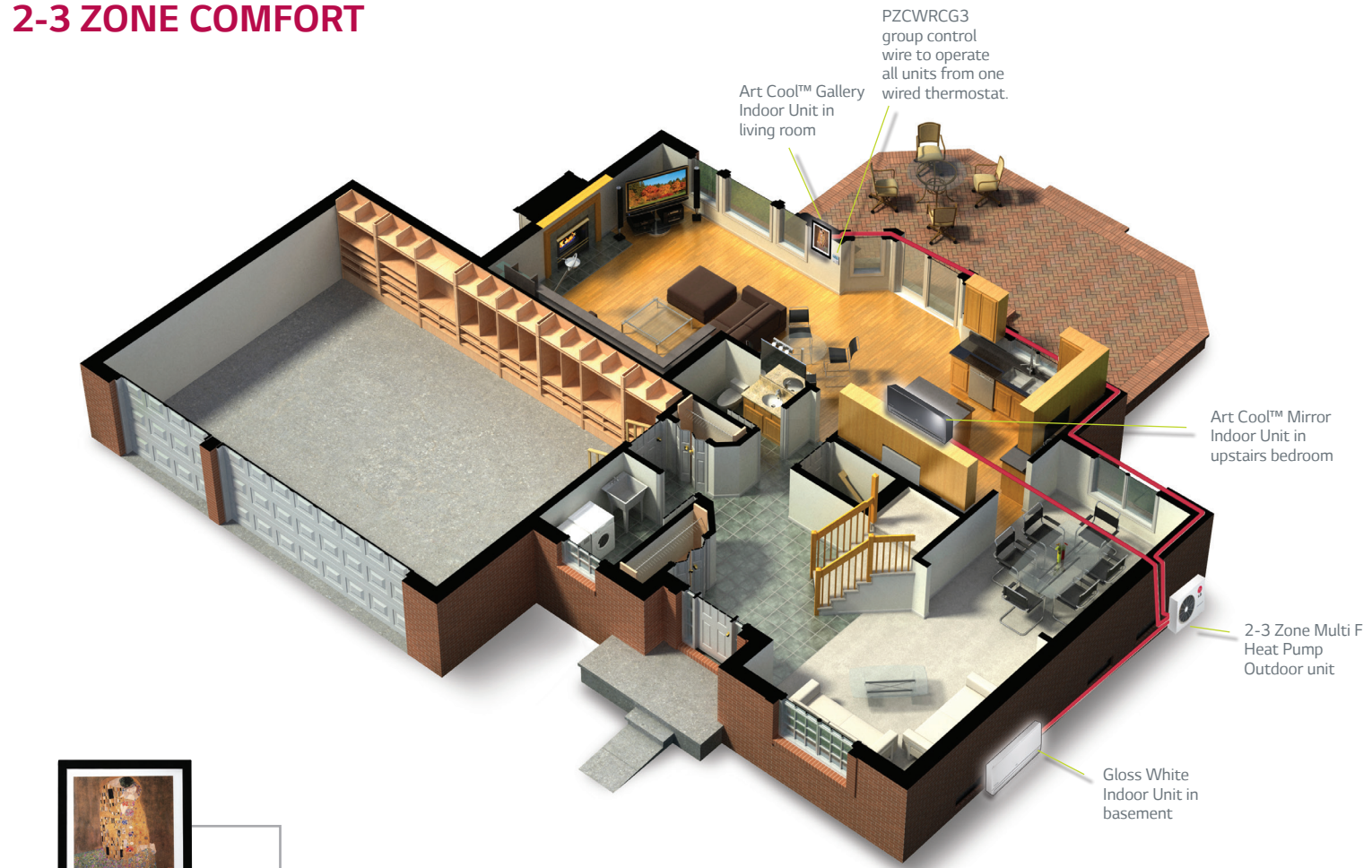
## LG Multi F Comfort Solutions

## Innovation for a Better Life



# Year-round comfort in all areas of your home

## 2-3 ZONE COMFORT



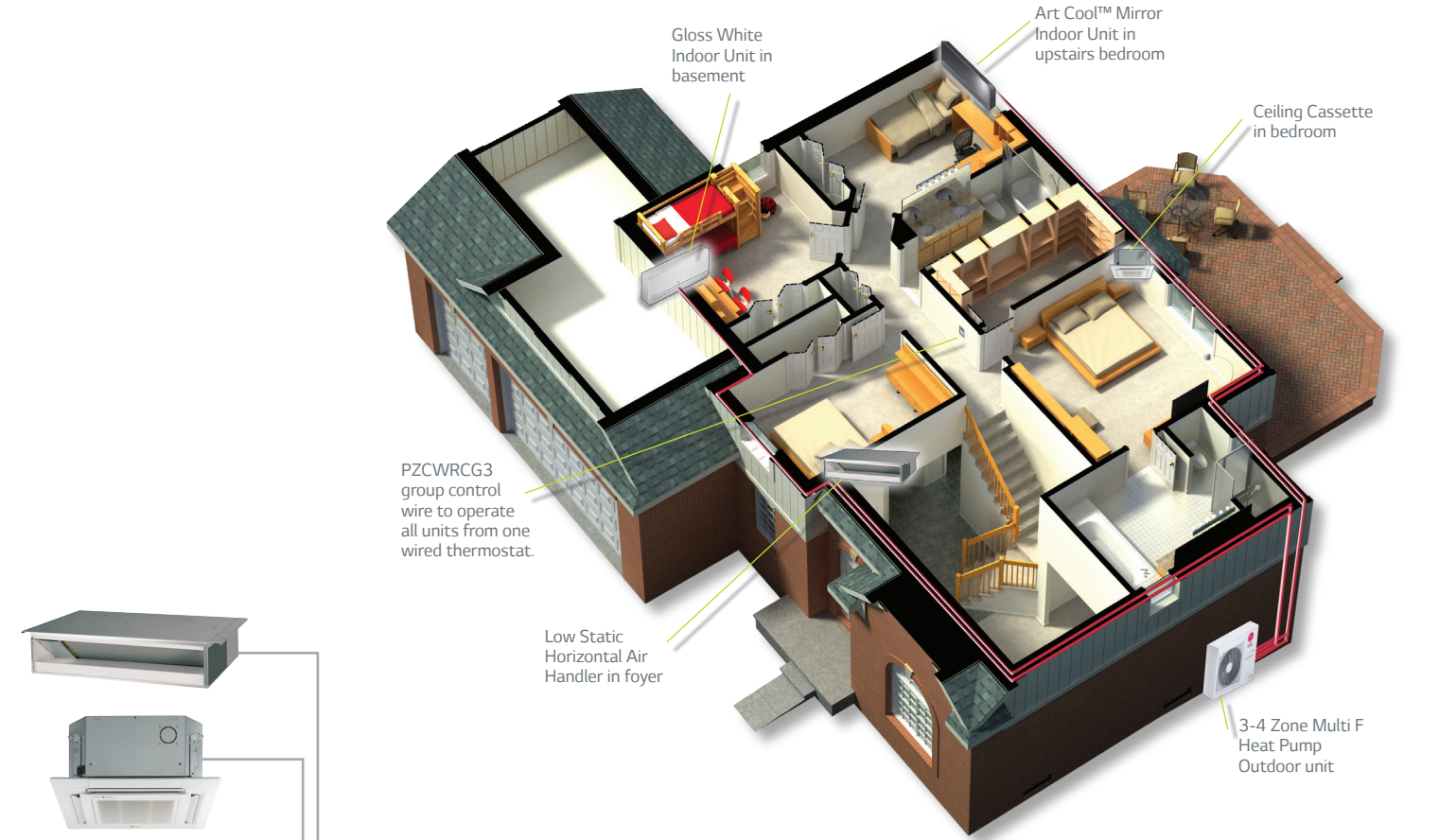
A typical 2-3 zone system may include units installed in the living room, basement and one bedroom. Other options may include units in both bedrooms plus the living room.

	Art Cool™ Gallery	Art Cool™ Mirror	Gloss White	Low Static Horizontal Air Handler	Ceiling Cassette
7,000			✓		
9,000	✓	✓	✓	✓	✓
12,000	✓	✓	✓	✓	✓
15,000			✓		

## Benefits of LG Multi F systems:

LG Multi F whole-house comfort systems provide powerful, efficient heating and cooling with up to eight indoor units operating off a single outdoor unit. In fact, most combinations are Energy Star. Individual room temperature control with low operating cost are at your fingertips with LG Multi F.

## 3-4 ZONE COMFORT

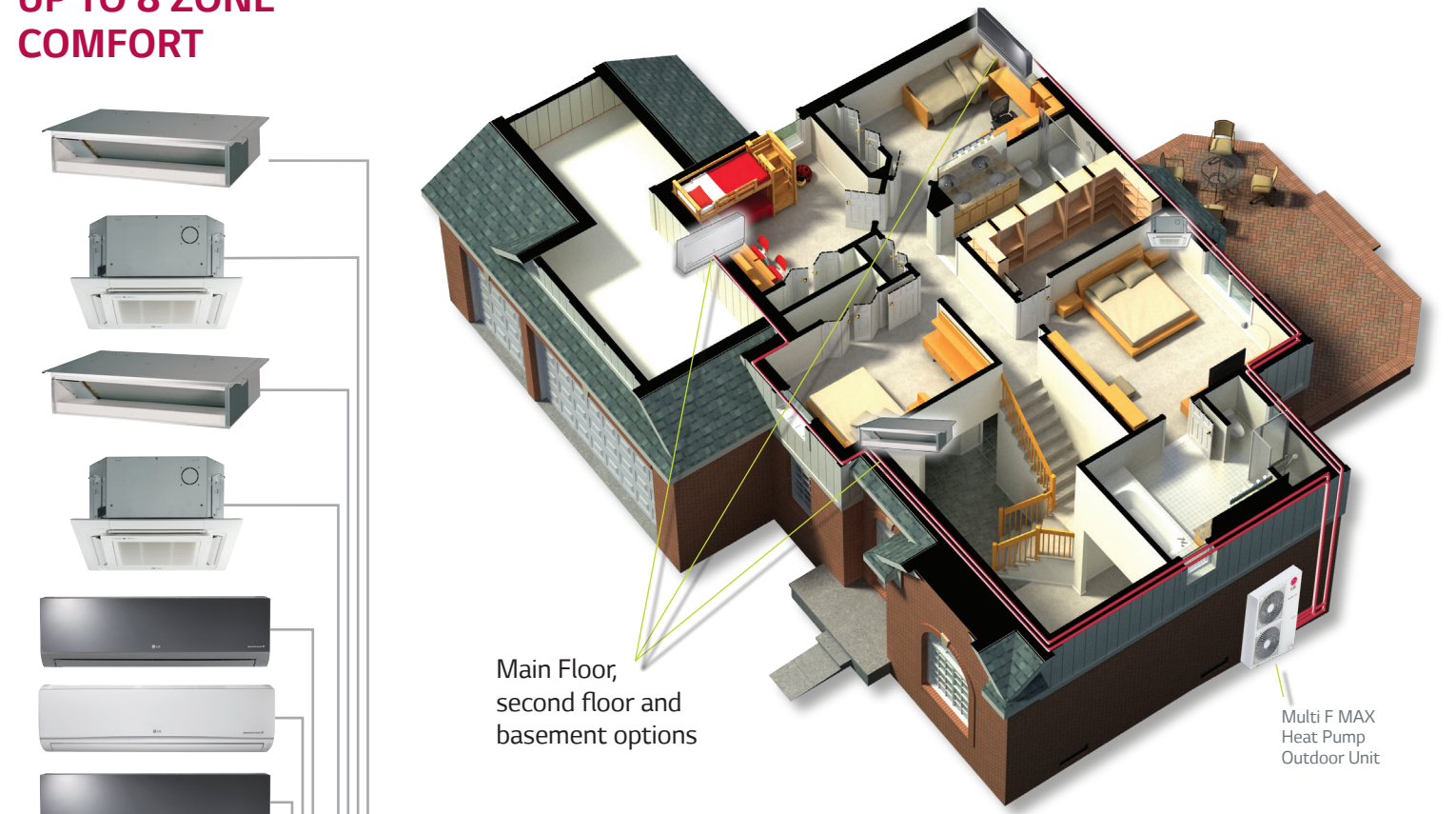


With a larger outdoor unit, heating capacity is increased with the 3-4 zone option, building on the 2-3 zone options. This may include additional indoor units in bedrooms, the den, sun room, garage or any other area not covered by a 2-3 zone option. Additionally, the LMU30CHV and LMU36CHV are compatible with our 24,000 BTU vertical air handler central ducted system.

	Art Cool™ Gallery	Art Cool™ Mirror	Gloss White	Low Static Horizontal Air Handler	Ceiling Cassette	High Static Horizontal Air Handler	High Static Vertical / Horizontal Air Handler
All Capacities	✓	✓	✓	✓	✓		
24,000	✓	✓	✓	✓	✓	✓	✓

Installation is easy and does not require major renovation – the pipes connecting your outdoor unit to the indoor units are small and easy to run throughout your house. Your contractor can usually install a whole house system in just a few days start-to-finish and adding an additional indoor unit down the road is simple and cost-effective. Using three or more indoor units is more cost-effective and uses less space than installing three individual single-zone systems.

## MULTI F MAX UP TO 8 ZONE COMFORT



Multi F MAX offers the total whole-house solution with 4, 4 1/2 & 5 ton options and up to 8 indoor units. It is compatible with all indoor unit options. All can easily be controlled from one wired thermostat.

	Art Cool™ Gallery	Art Cool™ Mirror	Gloss White	Low Static Horizontal Air Handler	Ceiling Cassette	High Static Horizontal Air Handler	High Static Vertical / Horizontal Air Handler
All Capacities	✓	✓	✓	✓	✓	✓	✓